

**1. Resolution No. 3653: A Resolution Establishing Fees and Charges for Chapter 7 of the Gresham Revised Code for Solid Waste and Medical Waste Collection Service, and Repealing Resolution No. 3605**

This item will approve Resolution No. 3653 establishing fees and charges for Chapter 7 of the Gresham Revised Code for Solid Waste and Medical Waste Collection Service, and repeal Resolution No. 3605. Solid Waste and Sustainability is the lead department.

minutes

**RESOLUTION NO. 3653**

**A RESOLUTION ESTABLISHING FEES AND CHARGES FOR CHAPTER 7 OF THE  
GRESHAM REVISED CODE FOR SOLID WASTE AND MEDICAL WASTE COLLECTION  
SERVICE, AND REPEALING RESOLUTION NO. 3605**

**THE CITY OF GRESHAM FINDS:**

Chapter 7, Offenses and Health, of the Gresham Revised Code (GRC), provides that the council shall establish certain fees and charges by resolution.

Resolution Number 3605 established fees and charges for GRC Article 7.25, Solid Waste Control.

**THE CITY OF GRESHAM RESOLVES:**

**Section 1.** The fees and charges for GRC Article 7.25, Solid Waste Control, are established as shown in Exhibit A, attached hereto and incorporated herein by reference.

**Section 2.** The fees in this resolution are not subject to indexing.

**Section 3.** Resolution No. 3605 is hereby repealed.

**Section 4.** This resolution shall be effective July 1, 2025.

Yes: \_\_\_\_\_

No: \_\_\_\_\_

Absent: \_\_\_\_\_

Abstain: \_\_\_\_\_

Passed by the Gresham City Council and effective on \_\_\_\_\_.

\_\_\_\_\_  
Eric Schmidt  
City Manager

\_\_\_\_\_  
Travis Stovall  
Mayor

Approved as to Form:

\_\_\_\_\_  
Ellen M. Van Riper  
City Attorneyss

## Garbage & Recycling

Gresham Revised Code (GRC) sections are for reference and are subject to change.

License Fee for Haulers (GRC 7.25.120)	Fee	New Fee
	<b>Effective July 1, 2024</b>	<b>Effective July 1, 2025</b>
License Fee for Haulers (% of gross receipts)	10%	10%
License Transfer Fee	\$250.00	\$250.00

Residential Standard Services (Single-Household Accounts) (GRC 7.25.135)

Basic monthly charge for each service level includes weekly collection of garbage, yard debris and recyclables.

Garbage Plus Yard Debris (Monthly Charge)	Fee	New Fee
o Garbage: 20-gallon cart / Yard Debris: 60-gallon cart	\$35.46	\$ 37.15
o Garbage: 35-gallon cart / Yard Debris: 60-gallon cart	\$41.23	\$ 43.17
o Garbage: 60-gallon cart / Yard Debris: 60-gallon cart	\$54.19	\$ 56.51
o Garbage: 90-gallon cart / Yard Debris: 60-gallon cart	\$61.59	\$ 64.32

Additional Garbage Cart Collection for Single-Household Accounts (Monthly Charge)	Fee	New Fee
o Second & any additional 20-gallon carts	\$23.01	\$ 24.11
o Second & any additional 35-gallon carts	\$26.81	\$ 28.07
o Second & any additional 60-gallon carts	\$33.03	\$ 34.45
o Second & any additional 90-gallon carts	\$39.07	\$ 40.79

Additional Yard Debris Cart Collection for Single-Household Account (Monthly Charge)	Fee	New Fee
o Each additional 60-gallon cart	\$8.82	\$9.32

Residential Special Services (Single-Household Accounts) (GRC 7.25.135)	Fee	New Fee
One 35-gallon cart (monthly) Once per month garbage service, with weekly collection of recyclables and yard debris	\$22.77	\$ 23.84
On-Call service: garbage only, one 35 gallon cart	\$18.23	\$ 19.09
Occasional extra for garbage, per can or bag (each)	\$6.20	\$ 6.49
Recycling Only Service (monthly) For non-garbage customers, weekly collection (excludes yard debris collection)	\$11.90	\$12.18
Yard Debris Extras (each) 32-gallon can, kraft yard debris bag, or bundle	\$4.43	\$ 4.71
Yard Debris Only, 60 gallon cart (per year) For non-garbage customers, (one year subscription, paid in advance) weekly collection	\$124.46	\$ 132.43
Yard Debris Exemption (Monthly Credit)	\$2.85	\$3.00

### Residential Collection from Non-Curbside Locations (GRC 7.25.135)

Standard residential collection is provided at the curbside of the public street. A customer whose residence is more than 75 feet from the standard collection location may request collection service at another location accessible by existing collection. Under all circumstances, collection of garbage, recyclables and/or yard debris from a collection location other than the standard residential curbside location will only be provided where and when the hauler determines that the location can be safely entered and exited with existing collection equipment.

Distance Fees for Garbage Collection	Fee	New Fee
Distance from the curb of the public street to collection location. Charged in addition to basic monthly charge.		
o 75 – 500 feet (monthly)	\$8.24	\$ 8.64
o 501 feet or longer (monthly)	\$10.98	\$ 11.51

Distance Fees for Yard Debris and Recyclables	Fee	New Fee
A customer who elects to pay the distance fee for non-curbside collection will receive collection of garbage at the non-curbside collection location that is accessible by existing collection equipment. Recyclables and yard debris will be collected at the public street. The customer may elect to pay an extra distance fee for collection of recyclables and yard debris at the point of garbage collection. Charged in addition to basic monthly charge.		
o 75 – 500 feet , 1 truck (monthly)	\$8.24	\$ 8.64
o 75 – 500 feet , 2 trucks (monthly)	\$13.73	\$ 14.39
o 75 – 500 feet , 3 trucks (monthly)	\$19.21	\$ 20.13

<b>Residential Services: Two-, Three- and Four-plexes with single billing (GRC 7.25.135)</b>	<b>Fee</b>	<b>New Fee</b>
Service includes garbage collection for each unit and collection of one shared 60 -gallon yard debris cart as well as recyclables from each unit. For additional service, reference Additional Garbage Cart Collection for Single-Household Accounts, above.		
Living Unit Charge (per living unit per month)	\$4.46	\$ 4.67
20-gallon Cart		
o First cart (monthly)	\$35.47	\$ 37.17
o Second and subsequent carts (monthly)	\$23.01	\$ 24.11
35-gallon Cart		
o First cart (monthly)	\$41.24	\$ 43.18
o Second and subsequent carts (monthly)	\$26.81	\$ 28.07
60-gallon Cart		
o First cart (monthly)	\$54.18	\$ 56.51
o Second and subsequent carts (monthly)	\$33.03	\$ 34.45
90-gallon Cart		
o First cart (monthly)	\$61.58	\$ 64.29
o Second and subsequent carts (monthly)	\$39.07	\$ 40.79
Non-Curbside Collection Surcharge		
o With yard debris services (per month and per property)	\$16.47	\$ 17.26
o Without yard debris services (per month and per property)	\$10.98	\$ 11.51

<b>Multifamily Cart Service (5 units and More) (GRC 7.25.135)</b>	<b>Fee</b>	<b>New Fee</b>
Service includes weekly garbage and recycling collection. Yard debris service requires one-year subscription. Must be a single-billing.		
Garbage Plus Yard Debris (Monthly Charge)		
o Garbage: 20-gallon cart (per cart)	\$28.85	\$ 30.24
o Garbage: 35-gallon cart (per cart)	\$31.61	\$ 33.10
o Garbage: 60-gallon cart (per cart)	\$43.00	\$ 44.85
o Garbage: 90-gallon cart (per cart)	\$49.87	\$ 52.07
o Yard Debris: 60-gallon cart (per unit)	\$4.46	\$ 4.74
Combined Multifamily and Commercial Yard Debris		
o 60-gallon cart	\$29.99	\$ 31.28
o 90-gallon cart	\$40.13	\$ 41.89
Commercial Cart Service (5 units and More) (GRC 7.25.135)		
One stop per week, includes recycling.		
35-gallon Cart		
o First cart (monthly)	\$35.54	\$ 37.21
o Each additional cart (monthly)	\$27.12	\$ 28.39
60-gallon Cart		
o First cart (monthly)	\$49.44	\$ 51.57
o Each additional cart (monthly)	\$39.35	\$ 41.04
90-gallon Cart		
o First cart (monthly)	\$56.11	\$ 58.58
o Each additional cart (monthly)	\$44.99	\$ 46.97

<b>Drop Box Rates (GRC 7.25.135)</b>	<b>Fee</b>	<b>New Fee</b>
Repeat Service (loose)		
Total charge includes a combination of all of the below fees.		
o Monthly Rental (collector furnishes drop box)		
· 10/20 Yard	\$76.31	\$88.00
· 30 Yard	\$86.70	\$99.00
· 40 Yard	\$97.12	\$111.00
o Hauling Fee	\$152.60	\$158.00
Charged each time drop box is picked up and taken to disposal facility for disposal or waste.		
o One-delivery charge	\$43.26	\$49.00

o Disposal Fee	Actual Cost	Actual Cost
Charged by disposal or recycling facility, or credits received in the transfer of recyclable materials to a processor will be credited to the customer plu		
o % Margin on Disposal fee	10%	10%
o Per Mile Charge	\$2.92	\$3.00
Applicability: Upon approval of the City Manager or designee, a per mile charge for mileage in excess of 18 miles round trip from the drop box customer to the disposal site for loads containing materials that must be taken to a special disposal site.		

Occasional or Single-Service Basis (loose)	Fee	New Fee
Total charge includes a combination of all of the below fees.		
o Per Day Rental (collector furnishes drop box) Fee for 10/20 yard drop box begins after 48 hours on site.		
· 10/20 Yard	\$7.63	\$9.00
· 30 Yard	\$11.36	\$13.00
· 40 Yard	\$15.14	\$17.00
o Hauling Fee	\$152.60	\$158.00
Up to 40 yards. Charged each time drop box is picked up and taken to disposal facility for disposal or waste.		
o One-delivery charge	\$43.26	\$49.00
o Disposal Fee	Actual Cost	Actual Cost
Up to 40 yards. Charged by disposal or recycling facility, or credits received in the transfer of recyclable materials to a processor will be credited to the customer plu		
o % Margin on Disposal fee	10%	10%
o Per Mile Charge	\$2.92	\$3.00
Applicability: Upon approval of the City Manager or designee, a per mile charge for mileage in excess of 18 miles round trip from the drop box customer to the disposal site for loads containing materials that must be taken to a special disposal site.		

Roll Off Compactor	Fee	New Fee
Total charge includes a combination of all of the below fees.		
o Hauling Fee (per Haul, up to 40 yards)	\$189.18	\$195.00
o Disposal Fee	Actual Cost	Actual Cost
Charged by disposal or recycling facility, or credits received in the transfer of recyclable materials to a processor will be credited to the customer plu		
o Per Mile Charge		
Applicability: Upon approval of the City Manager or designee, a per mile charge for mileage in excess of 18 miles round trip from the drop box customer to the disposal site for loads containing materials that must be taken to a special disposal site.		
o Per Mile Charge	\$2.92	\$3.00
o Collector furnished compactor		
If the collector furnishes the compactor, the collector may also charge a rental fee equal to the current rate the collector would pay on a lease-purchase plus any repair costs or such sum as agreed upon by the collector and the customer.		
o % Margin on Disposal fee	10%	10%
<b>Recycling for Multifamily Properties with Compactor</b>		
o Recycling (not including glass) (per living unit, monthly)	\$1.97	\$ 2.06
o Glass Recycling (per living unit, monthly)	\$0.31	\$ 0.32

Container Rates (GRC 7.25.135)	Fee	New Fee
The fees shown in the following chart sets forth the maximum allowable monthly charges based on size of container, number of containers, and number of stops per week. Includes recycling services for up to two times the volume of garbage. Includes food scrap services for businesses needing to comply with Business Food Scrap Collection Requirement. Charge largest size container as primary container.		
o 1 Cubic Yard Container, Not Compacted - Primary container		
· Pick up 1 time per week	\$115.47	\$ 118.54
· Pick up 2 times per week	\$224.00	\$ 230.15
· Pick up 3 times per week	\$332.50	\$ 341.72
· Pick up 4 times per week	\$441.03	\$ 453.33
· Pick up 5 times per week	\$549.52	\$ 564.89
· Pick up 6 times per week	\$658.06	\$ 676.51
o 1 Cubic Yard Container, Not Compacted - As additional container		
· Pick up 1 time per week	\$101.57	\$ 104.64
· Pick up 2 times per week	\$197.27	\$ 203.42
· Pick up 3 times per week	\$293.04	\$ 302.26
· Pick up 4 times per week	\$388.73	\$ 401.03
· Pick up 5 times per week	\$484.46	\$ 499.83

• Pick up 6 times per week	\$580.17	\$	598.62
o 1.5 Cubic Yard Container, Not Compacted - Primary container			
• Pick up 1 time per week	\$161.29	\$	165.90
• Pick up 2 times per week	\$313.04	\$	322.26
• Pick up 3 times per week	\$464.75	\$	478.58
• Pick up 4 times per week	\$616.50	\$	634.95
• Pick up 5 times per week	\$768.25	\$	791.31
• Pick up 6 times per week	\$920.01	\$	947.68
o 1.5 Cubic Yard Container, Not Compacted - As additional container			
• Pick up 1 time per week	\$143.21	\$	147.82
• Pick up 2 times per week	\$278.34	\$	287.56
• Pick up 3 times per week	\$413.46	\$	427.29
• Pick up 4 times per week	\$548.62	\$	567.07
• Pick up 5 times per week	\$683.74	\$	706.80
• Pick up 6 times per week	\$818.85	\$	846.52
o 2 Cubic Yard Container, Not Compacted - Primary container			
• Pick up 1 time per week	\$210.55	\$	216.70
• Pick up 2 times per week	\$408.81	\$	421.11
• Pick up 3 times per week	\$607.08	\$	625.53
• Pick up 4 times per week	\$805.34	\$	829.93
• Pick up 5 times per week	\$1,003.56	\$	1,034.30
• Pick up 6 times per week	\$1,201.82	\$	1,238.71
o 2 Cubic Yard Container, Not Compacted - As additional container			
• Pick up 1 time per week	\$186.88	\$	193.03
• Pick up 2 times per week	\$363.25	\$	375.55
• Pick up 3 times per week	\$539.64	\$	558.09
• Pick up 4 times per week	\$716.10	\$	740.69
• Pick up 5 times per week	\$892.50	\$	923.24
• Pick up 6 times per week	\$1,068.88	\$	1,105.77
o 3 Cubic Yard Container, Not Compacted - Primary container			
• Pick up 1 time per week	\$303.01	\$	312.23
• Pick up 2 times per week	\$588.57	\$	607.02
• Pick up 3 times per week	\$874.14	\$	901.81
• Pick up 4 times per week	\$1,159.69	\$	1,196.58
• Pick up 5 times per week	\$1,445.25	\$	1,491.36
• Pick up 6 times per week	\$1,730.83	\$	1,786.17
o 3 Cubic Yard Container, Not Compacted - As additional container			
• Pick up 1 time per week	\$269.98	\$	279.20
• Pick up 2 times per week	\$525.14	\$	543.59
• Pick up 3 times per week	\$780.34	\$	808.01
• Pick up 4 times per week	\$1,035.48	\$	1,072.37
• Pick up 5 times per week	\$1,290.64	\$	1,336.75
• Pick up 6 times per week	\$1,545.85	\$	1,601.19
o 4 Cubic Yard Container, Not Compacted - Primary container			
• Pick up 1 time per week	\$394.22	\$	406.52
• Pick up 2 times per week	\$765.96	\$	790.55
• Pick up 3 times per week	\$1,137.63	\$	1,174.52
• Pick up 4 times per week	\$1,509.37	\$	1,558.55
• Pick up 5 times per week	\$1,881.10	\$	1,942.59
• Pick up 6 times per week	\$2,252.82	\$	2,326.61
o 4 Cubic Yard Container, Not Compacted - As additional container			
• Pick up 1 time per week	\$352.16	\$	364.46
• Pick up 2 times per week	\$685.12	\$	709.71
• Pick up 3 times per week	\$1,018.16	\$	1,055.05
• Pick up 4 times per week	\$1,351.14	\$	1,400.32
• Pick up 5 times per week	\$1,684.17	\$	1,745.66
• Pick up 6 times per week	\$2,038.28	\$	2,112.07
o 5 Cubic Yard Container, Not Compacted - Primary container			
• Pick up 1 time per week	\$479.91	\$	495.28
• Pick up 2 times per week	\$932.76	\$	963.50
• Pick up 3 times per week	\$1,385.62	\$	1,431.73
• Pick up 4 times per week	\$1,838.41	\$	1,899.90
• Pick up 5 times per week	\$2,291.27	\$	2,368.13
• Pick up 6 times per week	\$2,744.12	\$	2,836.34
o 5 Cubic Yard Container, Not Compacted - As additional container			
• Pick up 1 time per week	\$429.93	\$	445.30
• Pick up 2 times per week	\$836.72	\$	867.46
• Pick up 3 times per week	\$1,243.52	\$	1,289.63

· Pick up 4 times per week	\$1,650.32	\$ 1,711.81
· Pick up 5 times per week	\$2,057.12	\$ 2,133.98
· Pick up 6 times per week	\$2,463.91	\$ 2,556.13
o 6 Cubic Yard Container, Not Compacted - Primary container		
· Pick up 1 time per week	\$557.84	\$ 576.29
· Pick up 2 times per week	\$1,088.77	\$ 1,125.66
· Pick up 3 times per week	\$1,620.02	\$ 1,675.36
· Pick up 4 times per week	\$2,146.31	\$ 2,220.10
· Pick up 5 times per week	\$2,642.66	\$ 2,734.88
· Pick up 6 times per week	\$3,201.81	\$ 3,312.48
o 6 Cubic Yard Container, Not Compacted - As additional container		
· Pick up 1 time per week	\$501.01	\$ 519.46
· Pick up 2 times per week	\$979.64	\$ 1,016.53
· Pick up 3 times per week	\$1,456.11	\$ 1,511.45
· Pick up 4 times per week	\$1,932.56	\$ 2,006.35
· Pick up 5 times per week	\$2,409.02	\$ 2,501.24
· Pick up 6 times per week	\$3,203.81	\$ 3,314.48
o 8 Cubic Yard Container, Not Compacted - Primary container		
· Pick up 1 time per week	\$751.54	\$ 776.13
· Pick up 2 times per week	\$1,466.74	\$ 1,515.92
· Pick up 3 times per week	\$2,182.35	\$ 2,256.14
· Pick up 4 times per week	\$2,891.30	\$ 2,989.68
· Pick up 5 times per week	\$3,559.80	\$ 3,682.77
· Pick up 6 times per week	\$4,315.81	\$ 4,463.37
o 8 Cubic Yard Container, Not Compacted - As additional container		
· Pick up 1 time per week	\$674.81	\$ 699.40
· Pick up 2 times per week	\$1,319.41	\$ 1,368.59
· Pick up 3 times per week	\$1,961.08	\$ 2,034.87
· Pick up 4 times per week	\$2,602.74	\$ 2,701.12
· Pick up 5 times per week	\$3,244.38	\$ 3,367.35
· Pick up 6 times per week	\$3,886.96	\$ 4,034.52
o Compacted		
To determine the maximum compacted container rate, a rate of 2.2 times the corresponding loose rate noted in the preceding loose rate chart will be used. If the manufacturer rates the compaction ratio between 3 and 4 to 1, the use a rate of 3.0 times the corresponding loose rate. Compaction ratios over 4 to 1 will use a rate of 4.0 times the corresponding loose rate.		

Commercial Food Waste Rates (GRC 7.25.135) - compactor or drop box customers		Fee	New Fee
The fees shown below set forth the maximum allowable monthly charges based on the size of container and number of containers. Commercial food waste service is only available once per week. Commercial food waste service is not available on call. The collector shall furnish the container. Charge largest size container as primary container.			
o 1 Cubic Yard Container, Loose			
· Primary Container	\$90.34	\$ 94.59	
· Each Additional Container	\$78.56	\$ 82.25	
o 1.5 Cubic Yard Container, Loose			
· Primary Container	\$125.41	\$ 131.30	
· Each Additional Container	\$110.12	\$ 115.30	
o 2 Cubic Yard Container, Loose			
· Primary Container	\$163.39	\$ 171.07	
· Each Additional Container	\$143.35	\$ 150.09	
o 3 Cubic Yard Container, Loose			
· Primary Container	\$234.27	\$ 245.28	
· Each Additional Container	\$206.30	\$ 216.00	
o 4 Cubic Yard Container, Loose			
· Primary Container	\$304.04	\$ 318.33	
· Each Additional Container	\$268.45	\$ 281.07	
o 64 gallon roll cart			
· 1st Container	\$44.51	\$ 46.60	
· Two or More Containers (each)	\$34.15	\$ 35.76	
· Additional Service Fee for 4 or more containers(each)	\$15.00	\$16.00	

On Call and Clean Up Container Rates (GRC 7.25.135)		Fee	New Fee
Clean Up Container Service (total of following)			
Rent shall not exceed \$30.00 per container in a 30-day period.			
o First Collection			
· % of Regular Container Rate	33%		33%

· Deliver fee (one time fee charged on first container only)	\$47.93	\$	50.18
· o Each Additional Collection			
· % of Regular Container Rate	33%		33%
· o Container Rent			
Charged to customer keeping container longer than 5 working days (M F) with no collection.			
· 2 Cubic Yards (per day)	\$2.32	\$	2.43
· 3 Cubic Yards (per day)	\$3.48	\$	3.64
· 4 Cubic Yards (per day)	\$4.64	\$	4.86
On Call Container - Permanent Account (total of following)			
· o Per Collection			
· % of Regular Container Rate	33%		33%
· o Each Additional Collection			
· % of Regular Container Rate	33%		33%
· o Container Rent (Monthly Charge)			
· 1 Cubic Yards (per day)	\$23.18	\$	24.27
· 1.5 Cubic Yards (per day)	\$26.08	\$	27.31
· 2 Cubic Yards (per day)	\$28.98	\$	30.34
· 3 Cubic Yards (per day)	\$34.77	\$	36.40
· 4 Cubic Yards (per day)	\$40.58	\$	42.49
· 5 Cubic Yards (per day)	\$46.59	\$	48.78
· 6 Cubic Yards (per day)	\$52.17	\$	54.62

Recycling Service for Commercial Drop Box Garbage Accounts or Commercial Accounts without Garbage Service (GRC 7.25.135)		Fee	New Fee
Weekly Recycling Only Cart Services (charged monthly)			
· o First Cart		\$8.11	\$ 8.49
· o Each Additional Cart		\$6.85	\$ 7.17
On Call Recycling Only Cart Services			
· o First Cart (per stop)		\$6.77	\$ 7.09
· o Each Additional Cart (per stop)		\$5.38	\$ 5.63
· o Fixed Monthly Cart Rental Fee		\$1.27	\$ 1.33
Recycling Only Container Services			
· o First Container			
· Pick up 1 time per week		\$60.88	\$ 63.74
· Pick up 2 times per week		\$108.51	\$ 113.61
· Pick up 3 times per week		\$156.12	\$ 163.46
· Pick up 4 times per week		\$203.75	\$ 213.33
· Pick up 5 times per week		\$251.40	\$ 263.22
· o Each Additional Container			
· Pick up 1 time per week		\$51.75	\$ 54.18
· Pick up 2 times per week		\$92.24	\$ 96.58
· Pick up 3 times per week		\$132.69	\$ 138.93
· Pick up 4 times per week		\$173.19	\$ 181.33
· Pick up 5 times per week		\$213.68	\$ 223.72
On Call Recycling Only Container Services (The collector shall furnish the container)			
· o First Container (per stop)		\$12.18	\$ 12.75
· o Each Additional Container (per stop)		\$8.54	\$ 8.94
· o Fixed Monthly Container Rental Fee		\$13.26	\$ 13.88

Infectious Waste (GRC 7.25.135)		Fee	New Fee
Boxes and Tubs (Price includes box, liner, pick up and disposal)			
· o 23-30 gallon box or 17-31 gallon tub			
· First Box/Tub Per Stop		\$47.30	\$50.85
· Second to Fifth Box/Tub Per Stop		\$44.46	\$47.80
· Sixth or more Boxes/Tub Per Stop		\$38.69	\$41.59
· o 43 gallon tub			
· First Box/Tub Per Stop		\$49.41	\$53.12
· Second to Fifth Box/Tub Per Stop		\$46.57	\$50.07
· Sixth or more Boxes/Tub Per Stop		\$40.79	\$43.84
· o 23-30 Incinerate Box			
· First Box/Tub Per Stop		\$90.28	\$111.42
· Second to Fifth Box/Tub Per Stop		\$87.60	\$108.03



Sixth or more Boxes/Tub Per Stop	\$82.11	\$101.13
Sharps Containers (Customer brings container to designated hauler when ready for disposal.)		
o 4-quart container	\$10.90	\$11.42
o 8-quart container	\$21.82	\$22.84

Other Fees	Fee	New Fee
<b>Cart cleaning</b>		
Roll Cart	\$18.08	\$ 18.93
Container	\$46.37	\$ 48.55
Call Back Fee	\$18.08	\$ 18.93
Reinstatement Fee (Fee may be charged for reinstatement if service has been discontinued.)	\$18.08	\$ 18.93
Late Payment Service Charge (Charges may apply if payment not received by due date)		
o % per month	1.50%	1.50%
o % per annum	18.00%	18.00%
Replacement of Curby	Actual Cost	Actual Cost

Recycle+	Fee	New Fee
Base fee per month	\$2.50	\$ 2.75
Per collection fee	\$9.25	\$ 9.75
Extra bags of core items - per bag	\$1.00	\$ 1.25
Block foam - per bag	\$9.00	\$ 9.50
Non-curb side pickup		
Non-curb side pickup over 5-150 feet from the curb	\$11.70	\$11.95
Non-curb side pickup over 150 feet from the curb	\$13.02	\$13.25

Bulky Item Pick-Up	Fee	New Fee
Bulky Item Pick-Up - Pick up fee: \$17.00	\$17.00	\$ 18.00
Extra large items -up to 250 pounds(entertainment center, couch, king size mattress including box springs)	\$39.00	\$ 42.00
Large items (recliner, dresser, other size mattress including the box spring)	\$27.00	\$ 29.00
Medium items (desk, bookshelf, chair)	\$15.00	\$ 16.00
Small items (pallet, end table, bicycle)	\$11.00	\$ 12.00
Electronics ( television, laptop, printer)	\$10.00	\$ 11.00
	\$15.00 first tire, each additional, \$2.00 off rim or \$4.00 on rim	\$10.00 per tire, add \$2.00 with rim
Tires (passenger vehicle, tire off the rim)		

Appliances	Fee	New Fee
Water heater (drained)	\$15.00	\$16.00
Stove	\$15.00	\$16.00
Refrigerator (residential size)	\$45.00	\$48.00
Freezer (residential size)	\$45.00	\$48.00
Washer or dryer	\$15.00	\$16.00
Dishwasher	\$15.00	\$16.00
Microwave (no glass tray)	\$5.00	\$6.00
BBQ (no tank)	\$15.00	\$16.00
Air conditioner	\$45.00	\$48.00

Other items - Bulky pick-up available for most other materials. For items not listed please contact hauler for cost		
Pick-Up fee is applied as a flat rate regardless of the number of items for disposal.		
If the bulky item is not there when the collector arrives (after 6:00 am) and the customer has not cancelled the pickup, the customer will still be charged the \$17.00 pickup fee. Pickup fee is applied as a flat rate regardless of the number of items for disposal.		
Items over 250 pounds will be charged the Metro tip fee.		

Additional Service (GRC 7.25.135)

If a need for a type of service arises that is not now foreseen or specifically covered by this rate schedule, then the charge for such service shall be:

- o Uniform and non discriminatory between customers of a collector;
- o Commensurate with the rates generally charged in the Portland Metropolitan Area; and
- o Subject to approval by the City of Gresham.

**Steve Fancher**  
Assistant City Manager

**Shannon Martin**  
Solid Waste &  
Sustainability Manager

Council Business Meeting  
June 3, 2025

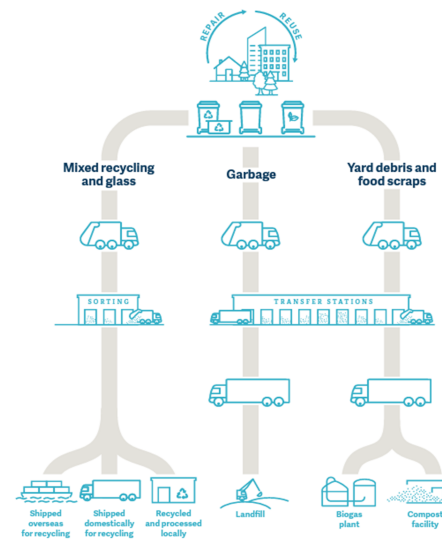


## Solid Waste Collection Rate Review

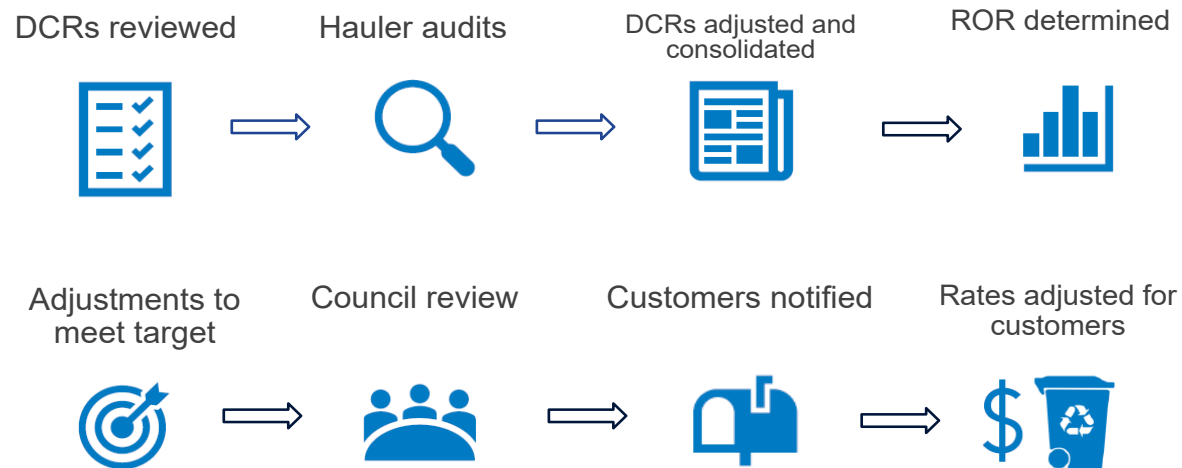
CITY OF  
GRESHAM

## Solid Waste System Overview

- Regulated or “license” system
- 5 Licensees serving 10 geographic zones
- City determines services and rates
- City conducts annual rate review



## Rate Review Process



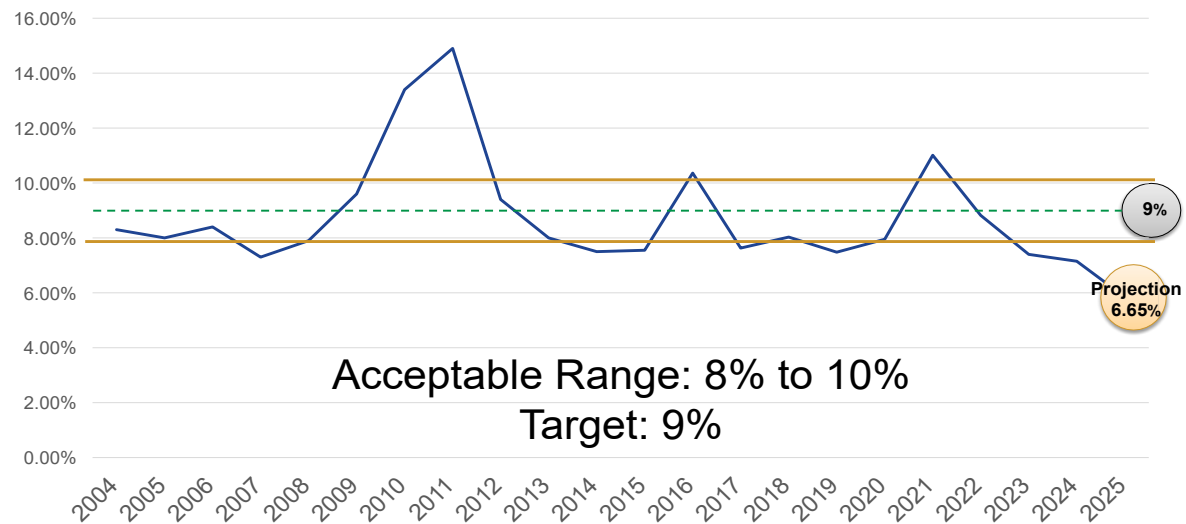
## Return on Revenue (ROR)

- Used in region as indicator of system financial health
- ROR is hauler's pretax profit margin
- Codified acceptable range = 8% to 10%
- Codified target when adjusting rates = 9%

2024 Results	Roll Cart	Container	Drop Box	Composite
ROR	6.2%	8.3%	7.1%	7.15%

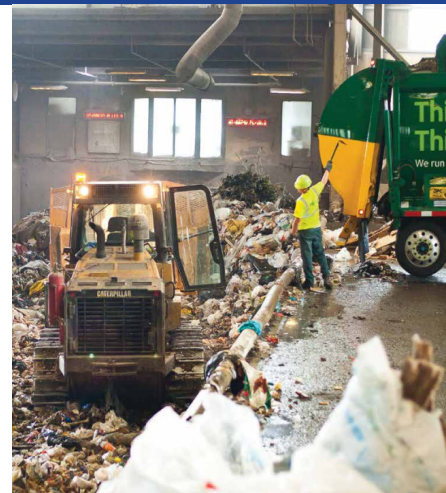
2025 Projection	Roll Cart	Container	Drop Box	Composite
ROR	5.9%	7.6%	6.6%	6.65%

## Return On Revenue Projection



## Key Financial Factors

- 5.53% increase to Metro solid waste tip fee
- 5% increase in cost of health insurance
- 4.9% increase in union driver wages and pension costs
- 5% increase to City ECHO fee
- Allwood Recyclers yard debris tip fee increase of \$1.00 per yard



CITY OF  
GRESHAM

## Proposed Residential Rates

Weekly Service	Current	Proposed	Increase
20-Gallon Garbage	\$35.46	\$37.15	\$1.69
35-Gallon Garbage	\$41.23	\$43.17	\$1.94
60-Gallon Garbage	\$54.19	\$56.51	\$2.32
90-Gallon Garbage	\$61.59	\$64.32	\$2.73
Monthly Service	Current	Proposed	Increase
35-Gallon Garbage	\$22.77	\$23.84	\$1.07



## Proposed Commercial & Drop Box Rates

Commercial Service	Current	Proposed	Increase
1 Yard, 1 pickup per week	\$115.47	\$118.54	\$3.07
2 Yard, 1 pickup per week	\$210.55	\$216.70	\$6.15
3 Yard, 1 pickup per week	\$303.01	\$312.23	\$9.22
90-Gallon Garbage	\$61.58	\$64.29	\$2.71
Drop Box Service	Current	Proposed	Increase
Haul Fee	\$152.60	\$158.00	\$5.40

## Recycle Plus Rates

Service	Current	Proposed	Increase
Base fee	\$2.50	\$2.75	\$0.25
Per collection fee	\$9.25	\$9.75	\$0.25
Extra bags	\$1.00	\$1.25	\$0.25
Block foam	\$9.00	\$9.50	\$0.50



## Staff Recommendation

Move to approve Resolution No. 3653 establishing fees and charges for Chapter 7 of the Gresham Revised Code for Solid Waste Collection Service, and repealing Resolution 3605.



CITY OF  
GRESHAM