



# Multnomah County

**Commissioner Vince Jones-Dixon**  
District 4, Multnomah County Board

**Anna Plumb, Deputy Director**  
Homeless Services Department

May 20, 2025

# HSD – Our Vision, Mission, Values

## **Vision**

To create an equitable community in which all people have safe, affordable, and accessible housing.

## **Mission**

The HSD works with community-based organizations and government entities to provide participant-driven, coordinated, and equity-based services focused on those who are experiencing homelessness or at risk of becoming homeless.

## **Values**

Collaboration | Equity | Inclusion | Integrity | Creativity | Quality

# JOHS Divisions



## **System Support, Access & Coordination**

- Data analysis and Reporting
- Community & Equity Engagement



## **Safety Off & On the Streets**

- Emergency and Alternative Shelter Options
- Outreach & Engagement



## **Housing Placement & Retention**

- Housing Case Management
- Rent Assistance
- Support with income acquisition
- Barrier Mitigation



## **Admin & Operations**

- Executive Leadership
- Strategic Direction
- Regional Coordination
- Policy Development
- Communications, Finance & HR



## **Supportive Housing**

- Long-term Rent Assistance
- Wrap-around Services

## Guiding Plans



### Homelessness Response Action Plan

- **Serve 2,700 additional people** with shelter/housing
- **Stabilize and increase** Permanent Supportive Housing (PSH)
- **Add 1,060 shelter units by 12/31/2025**
  - 832 funded as of FY 2026 budget (40 fully new in FY 2026)
- **Increase exits from adult shelter** to permanent housing by 15%
- **Reduce disparities for priority populations**

**Gresham Mayor Travis Stovall is voting member on Steering and Oversight Committee**

Troutdale resident Anna Marie Allen one of five non-voting members

# Guiding Plans



## SHS Local Implementation Plan

- **At least 75% of funding** to serve extremely low-income individuals/families with disabling conditions facing chronic or imminently chronic homelessness (Population A)
- **2,235 additional** PSH Opportunities
- **2,500 new placements** into housing annually
- **1,000 new households** prevented from homelessness annually
- **Continue to develop a system** to provide culturally-specific community-based organizations with technical assistance and capacity-building allocations

## Funding to East County FY 25 and FY 26\*

Division	FY 2025	FY 2026
City of Gresham	1,392,565	1,032,304
Outreach to Fairview, Wood Village, Troutdale	350,000	226,730
Contracted Shelter Providers	8,901,695	8,780,053
Miscellaneous	804,845	670,560
Community Engagement (formerly E County Liaison)	219,955	233,287
<b>Total</b>	<b>11,669,060</b>	<b>10,942,934</b>

\*Does **not** include all Outreach, Rapid Rehousing and Permanent Supportive Housing in East County and Gresham. Actual amount of services/funding is higher.

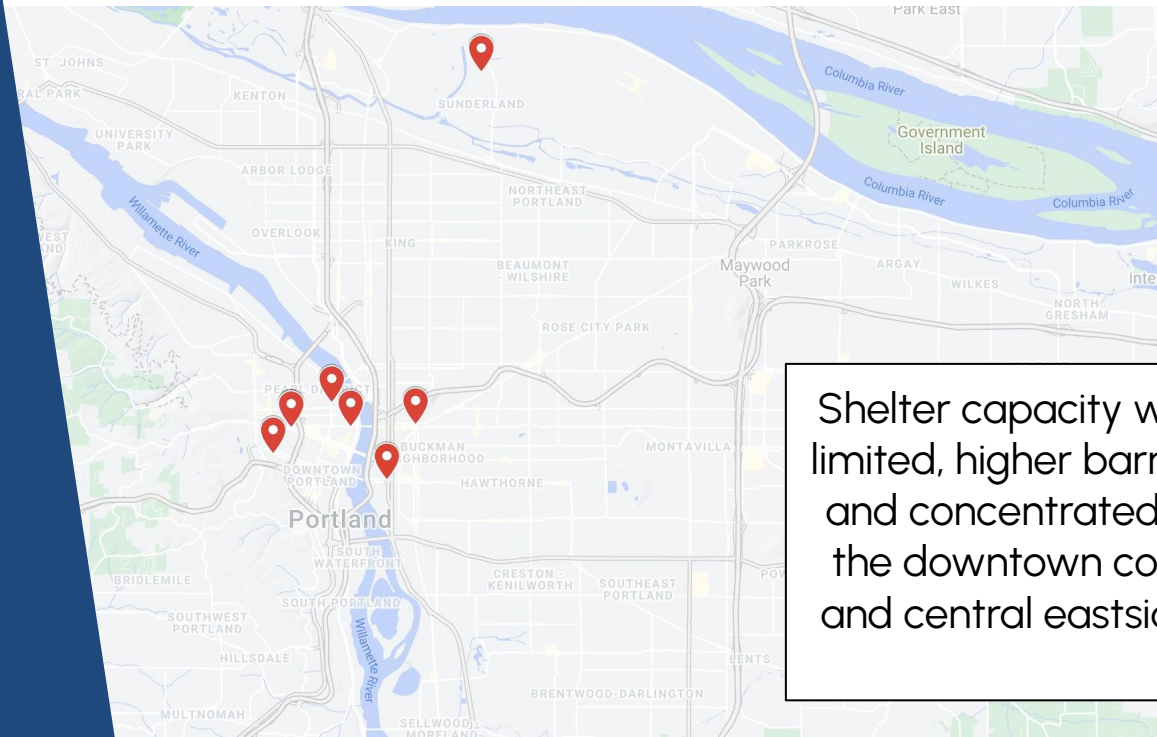


## Shelter

A historic visualization  
of Multnomah  
County's shelter  
system in 2015.

## Shelter System in 2015

BEFORE the state of emergency and the creation of JOHS.



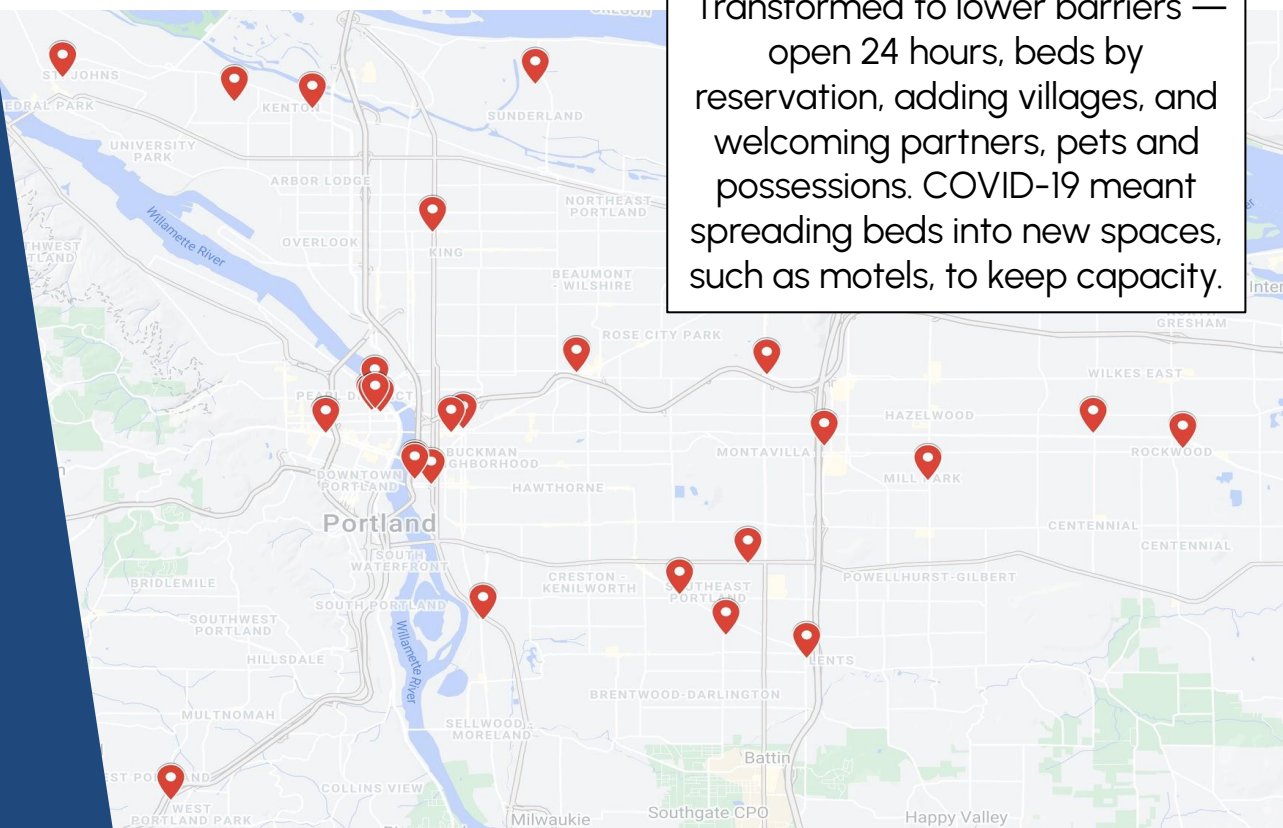
Shelter capacity was limited, higher barrier, and concentrated in the downtown core and central eastside.



## Shelter

A historic  
visualization of  
Multnomah  
County's shelter  
system over the  
past six years.

### Shelter System in 2021



Transformed to lower barriers — open 24 hours, beds by reservation, adding villages, and welcoming partners, pets and possessions. COVID-19 meant spreading beds into new spaces, such as motels, to keep capacity.

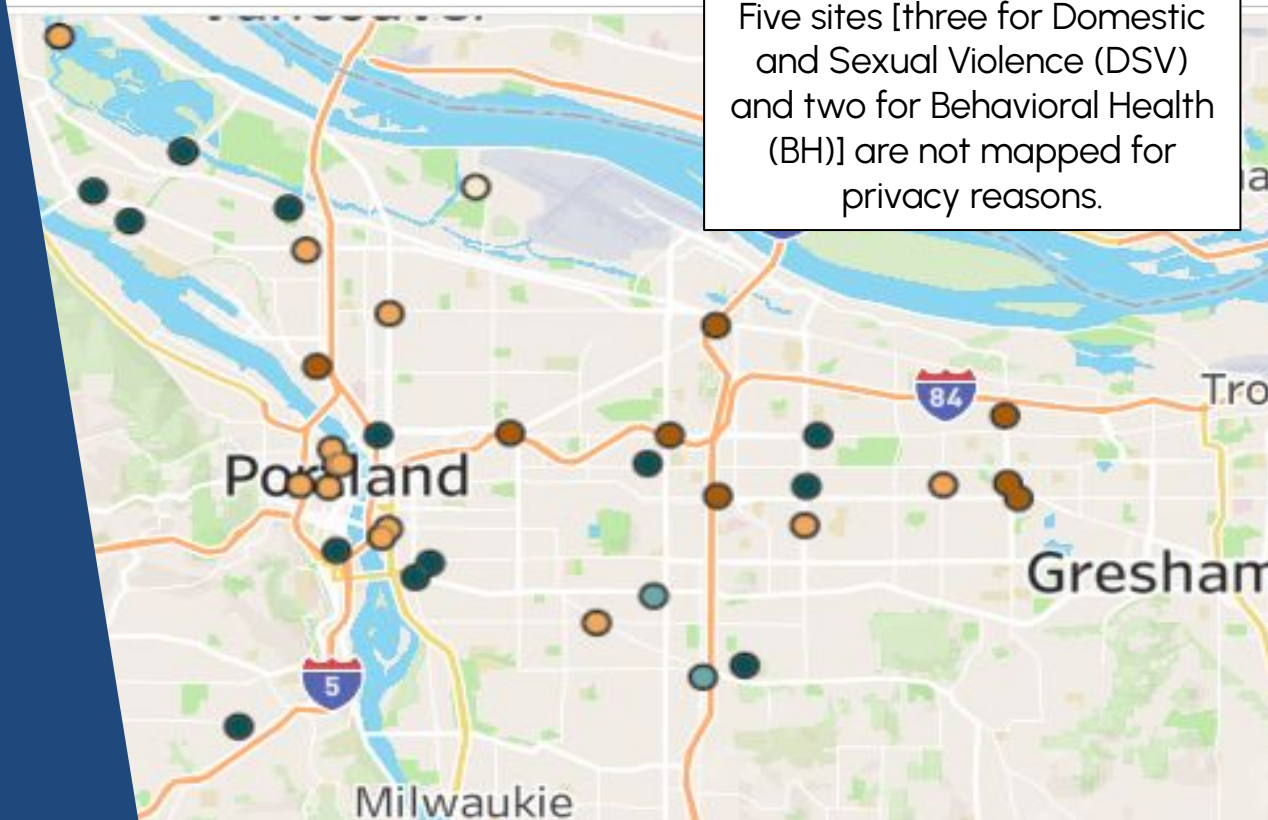




## Shelter

A historic  
visualization of  
Multnomah  
County's shelter  
system over the  
past ten years.

### Shelter System Now



## Community Sheltering Strategy

---

- Create goals and strategies for reducing unsheltered homelessness and create pathways to housing while demonstrating and practicing community partnership.
- Jessica Harper member of workgroup that met biweekly from October 2023 - February 2024
  - Review data on existing capacity, models, services; discuss needs with system experts (including Lived Experience Advisory Committee)
  - Create shelter capacity goals and the services that lead to housing exits

# Community Sheltering Strategy

## Four Pillars

1. Maintaining existing units and ensuring they are resourced to provide stabilization and a path to housing.
2. **Developing new shelter units that align with the various needs across the four population systems of care.**
3. Providing a variety of shelter types, modalities, and locations to meet the diverse needs of our community
  - a. Maintaining our focus on priority populations in the Sheltering Strategy and SHS Local Implementation Plan
4. **Focusing on geographic equity to ensure that shelter resources are available across the County.**

# Community Sheltering Strategy: Unit Goals

	<b>NEW</b> (by 12/31/2025)
<b>Adult</b>	<b>745</b> (includes ECHRC)
<b>Family</b>	<b>150</b>
<b>DSV</b>	<b>80</b>
<b>Youth</b>	<b>25</b>
<b>Total</b>	<b>1,000</b>

Chair’s Proposed Fy 2026 Budget funds 832 /1,000 units

## Current and Future Shelter Proportions

- Multnomah County has increased funded shelter units by over 200% since 2017, and 95% since 2019
- Currently, there are 52\* sites across the County, with four in Gresham
  - Gresham sites represent **7%** of all publicly-funded shelter sites and **7%** of all units\*
- Adding two sites would increase proportion to 11% of all shelter sites across the County (this does not include other sites being added elsewhere)

# Current and Future Shelter Proportions

Site*	Units
Stark Street Motel	43
Rockwood CDC	50 <sup>+</sup>
Gresham Women's	94
Rockwood Bridge	42
Total	<b>229 (7%)</b>
<b>Total Units in County*</b>	<b>3268</b>
ECHRC	29
Potential Family	50
Updated total*	<b>308 (9%)</b>
<b>Updated Total Units in County</b>	<b>3347**</b>

\*also includes 15 units not funded by Multco. Percent is the same if these numbers are added

\*only includes publicly funded sites; \*\*total doesn't reflect other planned additions elsewhere; actual total will be higher.

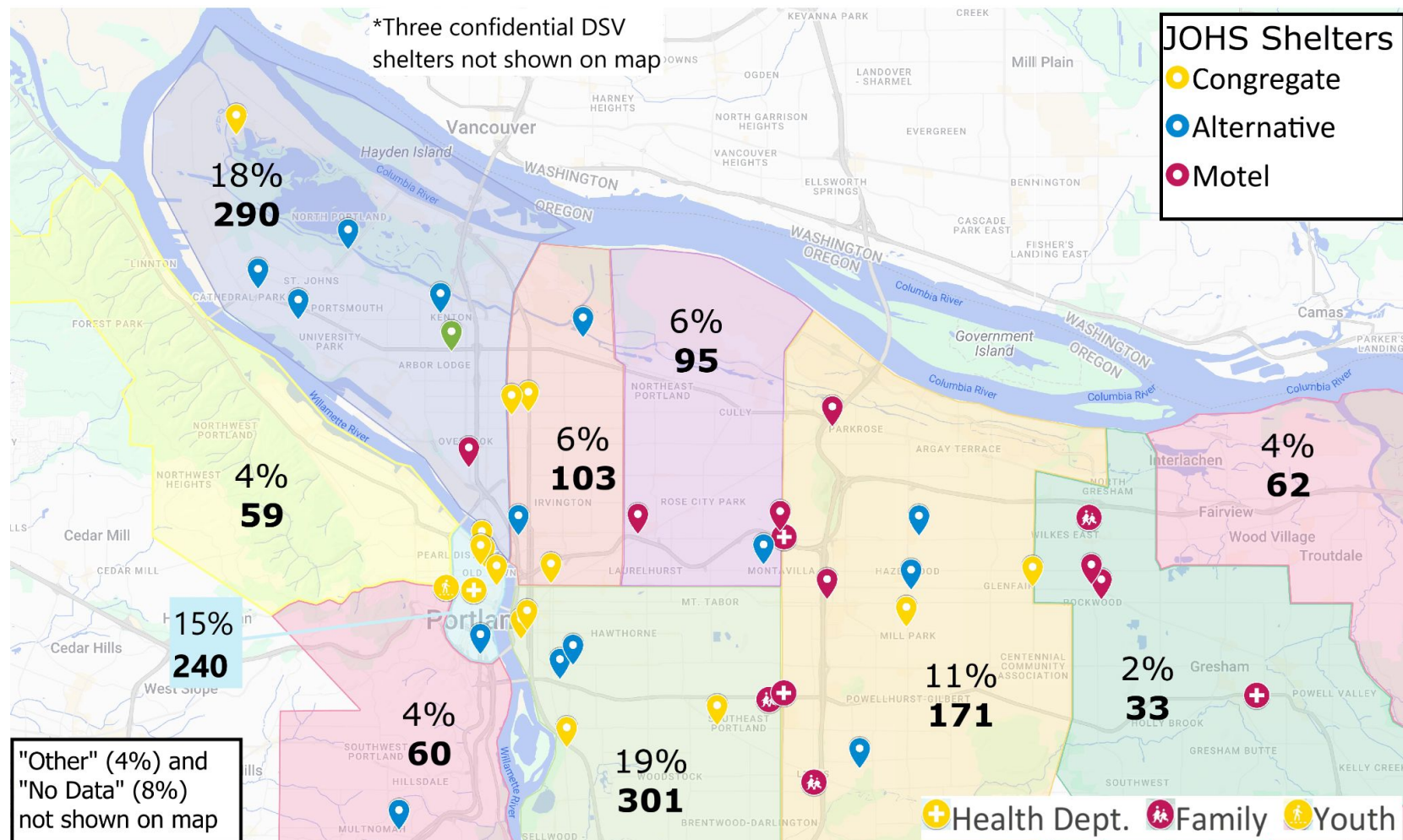
## Geographic Equity

- 2024 HSD Analysis measured community need in a geographic area using publicly-available Census survey data
- Focusing on local economic, demographic and housing market characteristics; and information on where people experience homelessness across the county.
- Overall, this assessment suggested that unmet housing needs among low-income households were highest in **Gresham, East County and North Portland**, as measured by the number of people living in cost burdened and overcrowded households
  - Three shelters recently added in North Portland (Arbor Lodge, St. Andrews Village, Schmeer Road)

## Geographic Equity and PIT Count

- PIT is widely understood to be **significant undercount of people experiencing homelessness**, and is only as good as the efforts to survey people in a region
  - Graphic on next page shows 2% of street counts in Gresham and 4% in East County; this is an underestimate.
  - New data coming soon, will share when we have it, but will likely be undercount as well.





# Homeless Families in East County

- 211 is the single point of contact to request service in our family system.
- Accompanying materials include calls from families self-identifying as homeless, along with a map
  - **20%** of callers specifically requesting Gresham for shelter
  - **2,198 calls** from ZIP codes that overlap Gresham and/or the three cities in East County (**42.9%** of all calls from families self-identifying as homeless)

# Motel Search Criteria

- Multco reviewed over 50 motels across the County. See accompanying materials for full criteria
  - Safety
  - Geographic Considerations
  - Layout
  - Room Features
  - Equity and Accessibility
  - Building Concerns
  - Price; Lease v Purchase options (limiting factor in East County)
- Location impacted by population interest and geographic equity

# East County Homelessness Resource Center



# Project History

- Acquired in December of 2022 for \$3.0 million. Purchased in response to requests for more investment from Multco in East County/Gresham area
- Since site acquisition, the facility has been used as an Emergency Severe Weather Shelter. *Regular programming will be different*
- In March 2024, JOHS received notice or approved Housing of Urban Development (HUD) funds for \$1,666,279, specifically targeted for facility improvements.
- Facility Investments to date
  - Improvements made for severe weather operations: \$294K
  - Resilience HUB Study: \$100K
  - Building maintenance, operations, security: \$223K

**Total  
Investment  
to date:  
\$3.6M**

# Project Overview

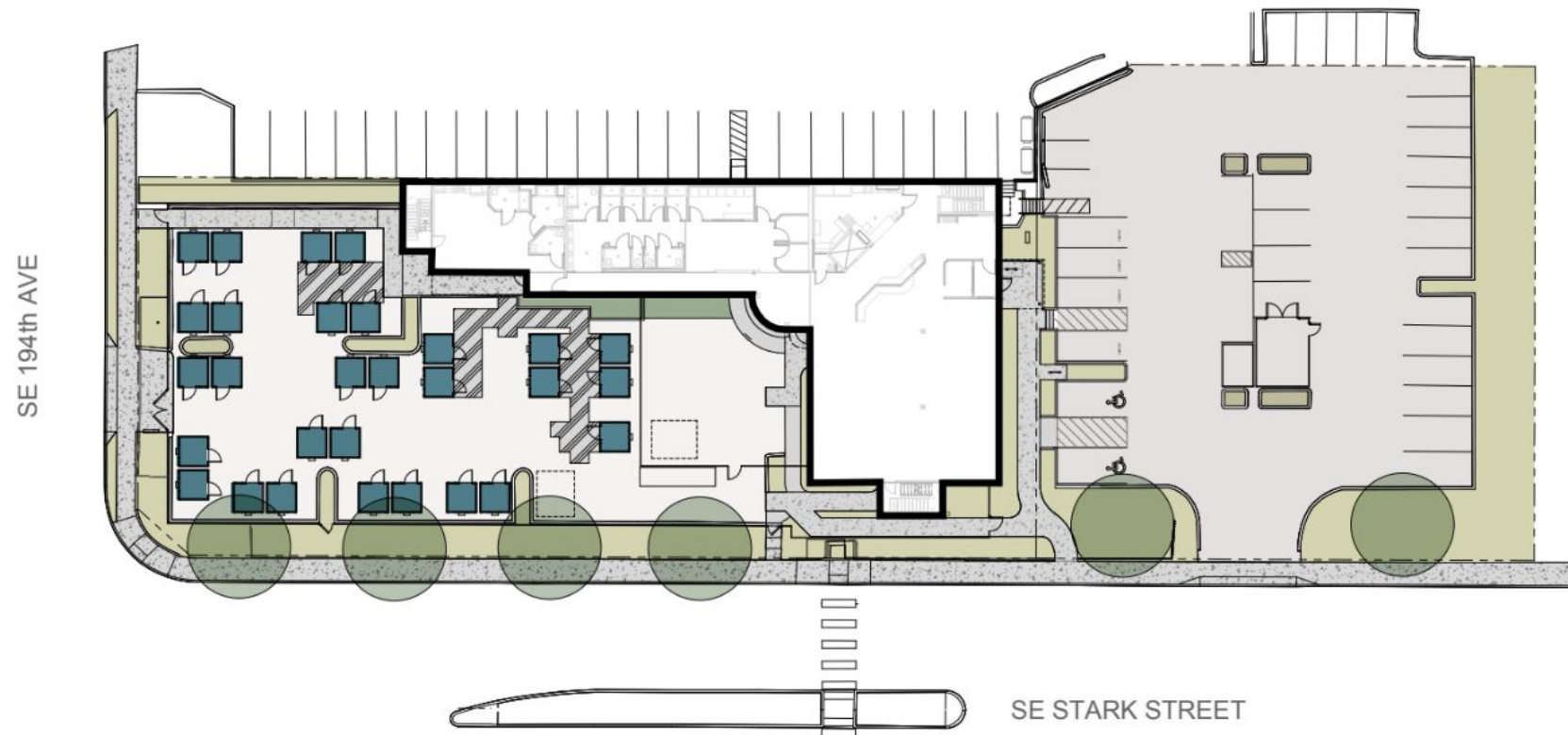
---

- **Day use center** on the 1st floor, hours of operation TBD
- **24/7 village-style alternative shelter** with 29 units that can accommodate up to 42 adults. **Provider on site 24/7 (difference from severe weather)**
- Severe weather emergency shelter beds that can accommodate up to 90 individuals.
- Addition of new restrooms, showers, laundry facilities, kitchen (for day center) and kitchenette (for 24/7 shelter), common spaces, and Case Management offices.
- Upgraded HVAC, electrical, and plumbing systems, an upgrade to the water service, interior finishes, partial siding and window replacement, roof replacement, a new entry (for the Day Center) and the addition of a generator.

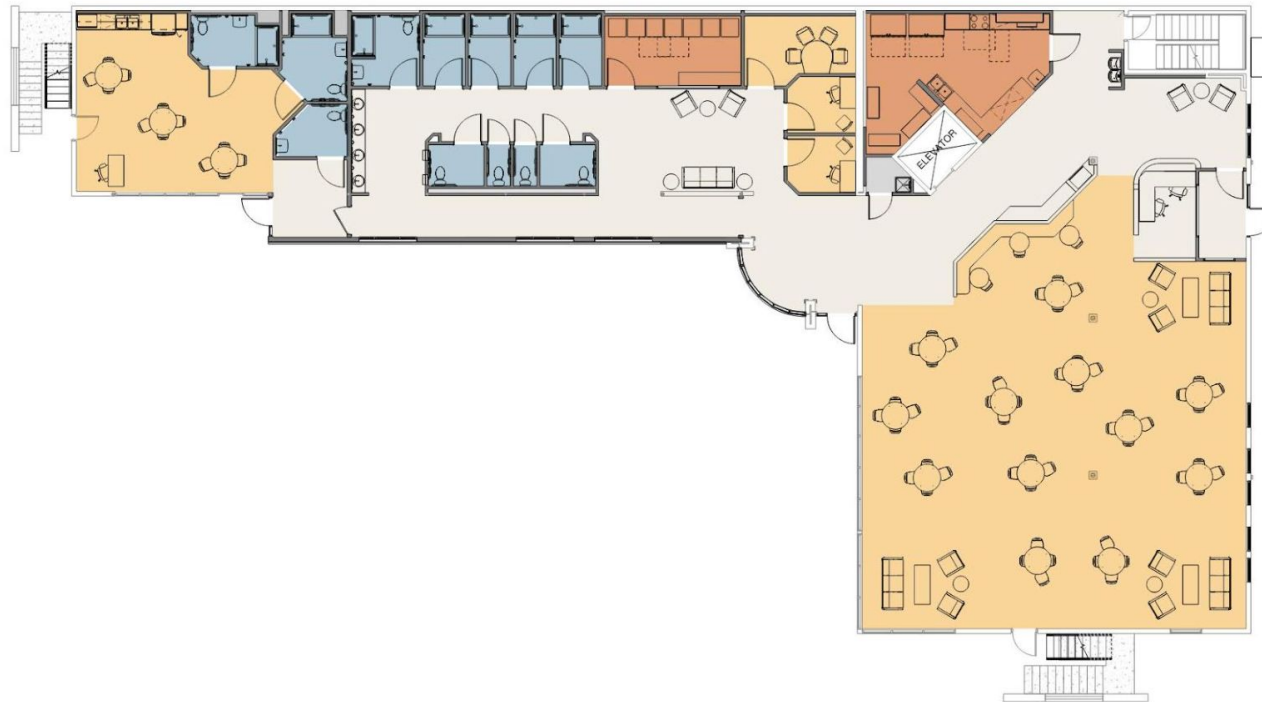


# Site Plan

---



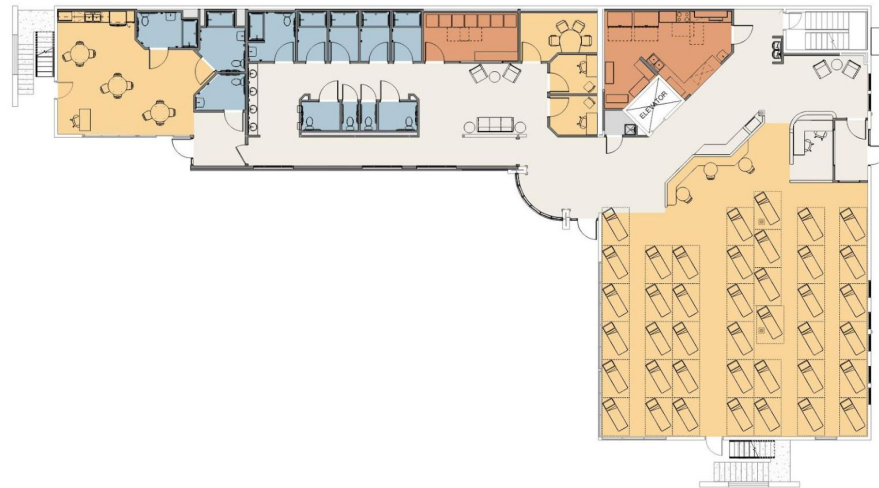
# 1st Floor Day Use Layout



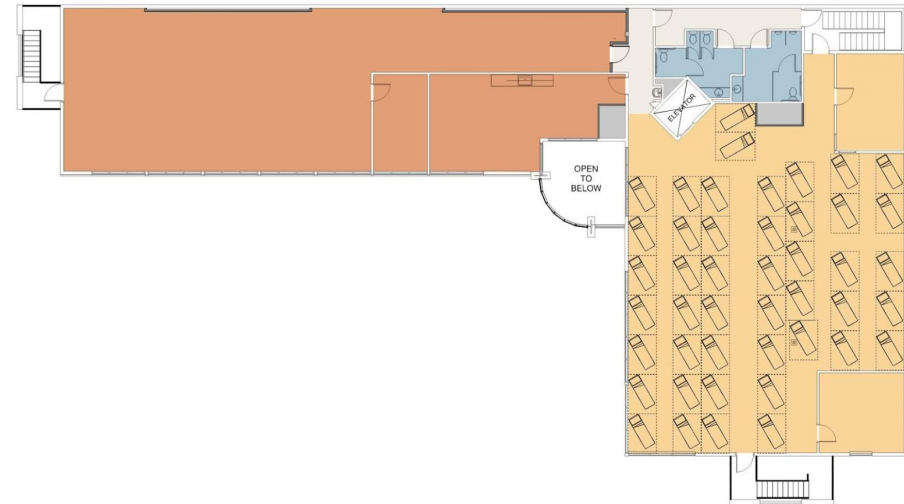


# Emergency Weather Shelter Layouts

## 1st Floor



## 2nd Floor



# Project Budget & Funding Sources

Project Budget	
Direct Construction	\$6,660,000
PODS	\$600,000
Soft Costs	\$405,000
Owner's Contingency	\$695,000
<b>Total Costs</b>	<b>\$8,360,000</b>

Funding Source	
Joint Office of Homeless Services Capital Fund 2519	\$6,693,721
Housing of Urban Development (HUD) (Economic Development Initiative funds (EDI))	\$1,666,279
<b>Funding Total</b>	<b>\$8,360,000</b>

# Timeline for Project



\*Subject to change 27

# Overview of Engagement

- Meetings with community partners:
  - Gresham City Manager's Office and Gresham Homeless Services
  - Tamra Colonial Estates residents and property manager
  - Reynolds Schools & Davis Elementary
  - The Salvation Army Gresham Office
  - Kaiser Permanente Rockwood Office
  - Gresham Neighborhood Coalition and member associations
  - Oregon State Representatives, Reps. Hudson and Ruiz
- Held 2 general public meetings (Sep 2024 and Mar 2025), and mailer to local businesses and residences (1075 addresses)
- Monthly executive stakeholder meetings with City of Gresham representatives

# Planned Engagement Next Steps

- Begin Good Neighbor Agreement (GNA) working sessions in June 2025
  - Parties invited: Gresham Neighborhood Coalition, Tamra Colonial Estates, The Salvation Army, Kaiser Permanente, Reynolds Schools, City of Gresham, and Sunstone Way (planned operator)
  - Timing somewhat dependent on construction
- Tentative presentation in summer for Reynolds Schools community
- Third general public meeting in Fall 2025
- Continue convening GNA parties as a Community Advisory Committee after project opens in late 2025 or early 2026
- [Project Website](#)

# Gresham involvement so far

- Gresham Homeless Services Staff involved in:
  - ECHRC Executive Stakeholder Committee (monthly meetings with project stakeholders and leaders; usually internal to County)
  - Provider selection process
  - Multiple, regular discussions on programming, priority, etc.
  - Two meetings about the Good Neighbor Agreement
  - Monthly meetings with East County leaders, HSD leaders and staff, and Multnomah County District 4

# Partnership Opportunities

- Time to plan and partner as site develops
  - Programming Development with Sunstone Way
  - Day Center Programming (Workforce, etc. )
- Already agreed to priority for Gresham and East County in pods
- Potential use of day space for Gresham and East County team(s)
- What else would you want to see happen at the site?